



VIGISCAN

Panoramic Infrared Vision System

INTRODUCTION

VIGISCAN infrared vision system comprises a sensor head rotating continuously at 1 round/sec for 360° azimuth coverage. The system incorporates a number of advanced features in order to achieve compact equipment size and high image quality.

The ultra wide panoramic field of view (360° in azimuth) and continuous monitoring ensure that no event is missed over extremely large areas in total darkness, fog, smoke.

The user friendly software provides great flexibility in accessing and displaying various data for fast display of anomalies in the field of view. Powerful algorithm performs detection of targets in complex backgrounds. Detection and tracking of intruders is immediate.

Operating in the familiar Windows environment, button and icon tool selection with point and click operation ensures clear display of the panoramic image as well as zoom on area of interest.

ADVANTAGES

- Extremely wide area coverage : 360° in azimuth
- High image quality
- Fast image rate : one 360° image every second
- Choice of elevation FOV: 5°, 10° or 20°
- Adjustable tilt
- Remote control through PC
- Passive operation (intrusive lighting not required)
- Automatic target detection and tracking

APPLICATION

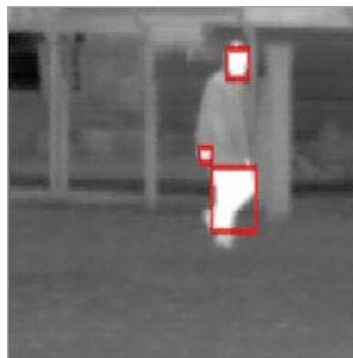
- Perimeter security
- Airport traffic monitoring
- Search and rescue
- Intrusion detection
- Day and night panoramic scrutiny
- Fight against smuggling and drug trafficking
- Coastal and border passive surveillance
- Night time navigation
- Early detection of forest fire
- Oil/pollutant detection on water



VIGISCAN rotating sensor and platform



Infrared Image Display



Detection, tracking and zoom on intrusion

TECHNICAL DATA

SENSOR AND PLATFORM

	VIGISCAN 20	VIGISCAN 10	VIGISCAN 05
Vertical FOV :	20°	10°	5°
Horizontal FOV :	360°	360°	360°
Image resolution :	1.2 mrad (V)x1.1 mrad (H)	0.6 mrad (V)x0.55 mrad (H)	0.3 mrad (V)x0.27 mrad (H)
Scanning speed :	360°/sec (1 rps)	360°/sec (1 rps)	360°/sec (1 rps)
Detector type :	LWIR or MWIR HgCdTe 288 x 4 TDI FPA	LWIR or MWIR HgCdTe 288 x 4 TDI FPA	LWIR or MWIR HgCdTe 288 x 4 TDI FPA
Cooling :	Stirling microcooler	Stirling microcooler	Stirling microcooler
Number of pixels	10 000 (H) x 576 (V)	20 000 (H) x 576 (V)	40 000 (H) x 576 (V)
Video output :	RS-422 14 bits digital	RS-422 14 bits digital	RS-422 14 bits digital
Control interface :	RS-422 or TCP/IP	RS-422 or TCP/IP	RS-422 or TCP/IP
Dimensions (Dia x H) :	250 mm x 415 mm	300 mm x 450 mm	350 mm x 500 mm
Weight :	13 kg	15 kg	20 kg
Operating temperature :	-30°C to +55°C	-30°C to +55°C	-30°C to +55°C
Protection standard :	IP 65	IP 65	IP 65
Power supply :	24V DC / 3 Amps	24V DC / 3 Amps	24V DC / 3 Amps
Detection range for a person In total darkness :	Up to 1 km	Up to 2 km	Up to 3 km

CONTROL AND DISPLAY SOFTWARE

Operating system:	PC Windows XP Professional
Software functions:	Remote sensor control and set-up Panoramic display Zoom (2x, 4x, 8x) on area of interest Automatic contrast/brightness control Colour palette or white hot/black cold polarity or reverse Detection and tracking on targets Storage of image sequences Image playback

Above information is subject to changes without notice



SYSTÈMES INFRAROUGES

ZAC de la Sablière, 10 rue Maryse Bastié
91430 IGNY - FRANCE
tel: +33 1 69 35 47 70 fax: +33 1 69 35 47 80
e-mail: hgh@hgh.fr <http://www.hgh.fr>